



AC1900 Dual Band Wireless USB3.0 Adapter



Quick Installation Guide

REV. 1

In the box

- 1 x AC1900 Dual Band Wireless USB 3.0 Adapter
- 1 x USB Mini Dock
- 1 x Quick Start Guide

System Requirements

- At least one USB 3.0
- Windows XP/7/10
- MAC OS X

For online quick start guide :

- Please visit our website www.wavlink.com/manual to download the English quick start guide.
- Visitez notre site web officiel www.wavlink.com/manual et téléchargez le Mode d'Emploi en Français.
- Visite nuestra página web oficial www.wavlink.com/manual para descargar las instrucciones en español.
- Per scarico del manuale d'uso in italiano, si prega di consultare il nostro sito: www.wavlink.com/manual.
- Besuchen Sie unsere Website www.wavlink.com/manual, ums Handbuch in Deutscher Sprache herunterzuladen.
- 请访问官网www.wavlink.com/manual下载中文说明书。
- 弊社の公式サイトwww.wavlink.com/manualにアクセスして日本語の取扱説明書をダウンロードしてください。

01

Introduction

Thank you for purchasing the AC1900 Dual Band USB Adapter

The AC1900 Dual Band Adapter delivers powerful wireless AC technology to your desktop or notebook computer. Simply plug the adapter into an available USB port and connect to a wireless network to access a secure, high-speed internet connection - 2.4GHz or 5GHz. And with integrated Dual Band technology, you'll have reduced Wi-Fi interference to maximize throughput for faster streaming, gaming, and Skype calls.

Installation

IMPORTANT: For proper operation, do not connect the AC1900 Dual Band Adapter to your computer before you install the software. If you do, wait for the Found New Hardware screen to display and click on **"Cancel"**; otherwise, the installation process will likely be adversely affected.

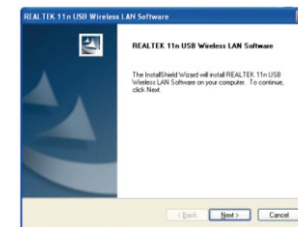
(Please download latest drivers then proceed.
Driver download links are at the end of this manual.)



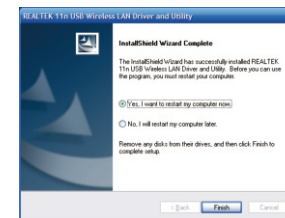
To start to install, please select "USB 802.11AC Adapter".

02

Click "Next" to proceed.

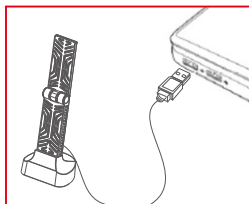


The installer will automatically install the program. When done you will see the picture like below, Please select **"Yes, I want to restart my computer now"** on **"Finish"**

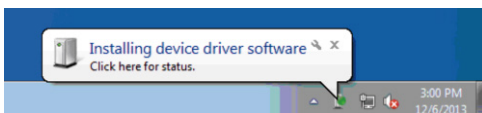


03

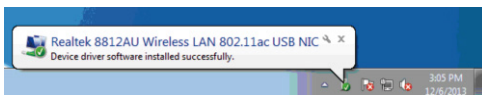
With the computer now turned on, insert the AC1900 Dual Band Adapter into an open USB port.



Status screen will display, indicating that the installation is in progress. No action is needed at this point.



When the Completing the Found New Hardware Wizard screen displays, it indicates that the installation has been successfully completed and your AC1900 Dual Band Adapter is ready for configuration.

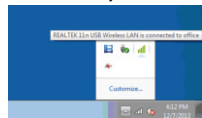


04

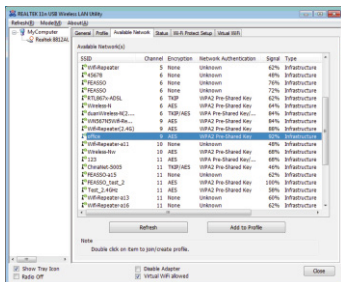
Configuration

Once the installation is complete, you can configure the AC1900 Dual Band Adapter to connect to a wireless access point (AP). The wireless configuration utility will start automatically, and you'll also find a tray icon at the lower right in your Windows systems tray.

1. Click the tray icon and select the icon to Open Config Utility.

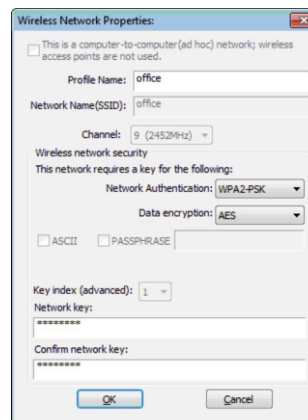


2. The configuration utility will scan for wireless networks within range. Click **"Refresh"** to refresh the list of available wireless networks. To join a particular network that displays, just select it and click **"Add to Profile."**



05

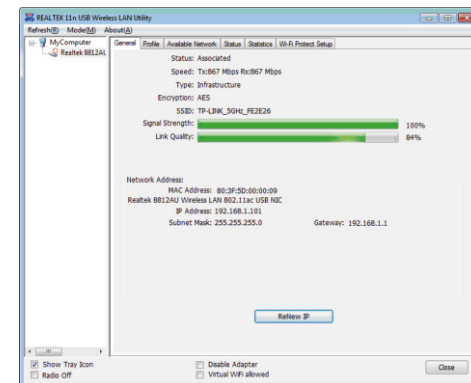
3. If the wireless network uses encryption, you need to input the correct encryption key. The configuration utility automatically suggests the correct authentication type (see the drop-down list), and you should not change the suggested value.



NOTE: For WPA/WPA2 networks, you need to select the correct encryption type, as well (AES or TKIP). These settings depend on how the wireless network is set up. Only the owner of the wireless network can provide the required information.

06

4. If the wireless access point is successfully connected, you'll see.



07