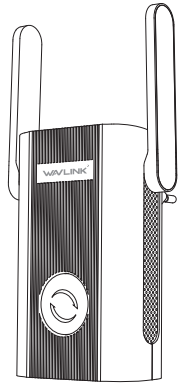




Wi-Fi Range Extender

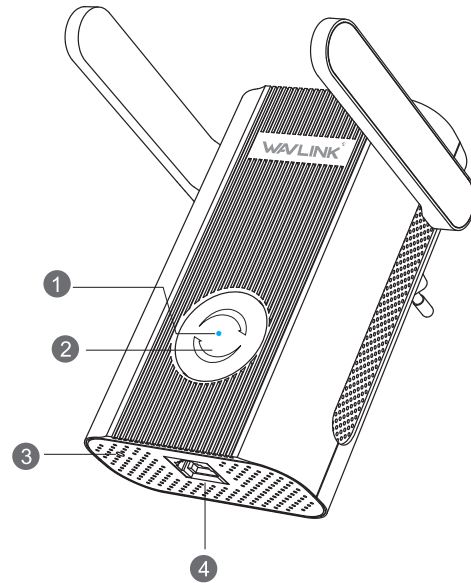
Quick Start Guide



Model: **Aerial X**

REV.E3

Hardware Overview



- 1 Status LED
- 2 WPS Button
- 3 Reset Button
- 4 LAN Port

Default Parameters

Login: <http://wifi.wavlink.com>

Default IP: **192.168.10.1**

Login Password: **admin**

2.4G SSID: **WAVLINK-N**

5G/AC SSID: **WAVLINK-AC**

LED Indicators

Pink ON	The Device has started up
Blue Flashing	Slow Flashing: The Extender WPS is trying to connect to your PC or phone Fast Flashing: The Extender WPS is connecting to your AP or router

AP Mode LED Indicators

Blue ON	Internet connected
Red Flashing	Internet disconnected

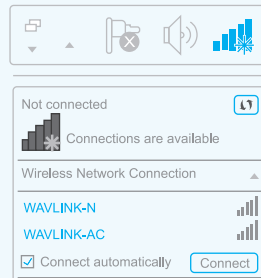
Repeater Mode LED Indicators

Blue ON	Best Reception: 75% to 100%
Yellow ON	Good Reception: 50% to 75%
Red ON	Weak Reception: below 50%
Red Flashing	Wi-Fi Disconnected

OPTION ONE Wi-Fi Repeater Mode Using a Web Browser

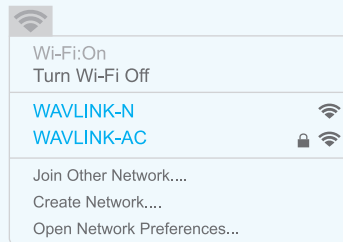
1 Connect to the Device

For Windows User



1. Disconnect the Ethernet (Wired) connection from your laptop (if any).
2. Turn your laptop's Wi-Fi ON if it is OFF.
3. Click the Wi-Fi icon on the taskbar and connect to the Extender's network: **WAVLINK-N** or **WAVLINK-AC**.

For Mac OS X User



1. Disconnect the Ethernet (Wired) connection from your laptop (if any).
2. Turn your laptop's Wi-Fi ON if it is OFF.
3. Click the Wi-Fi icon on the top right corner of the screen, and connect to the Extender's network: **WAVLINK-N** or **WAVLINK-AC**.

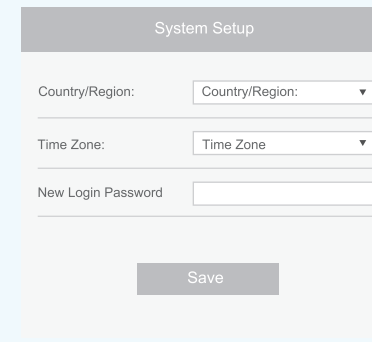
2 Configure

1. Launch a web browser and enter wifi.wavlink.com in the address field. Enter **admin** (all lowercase) for the first login.



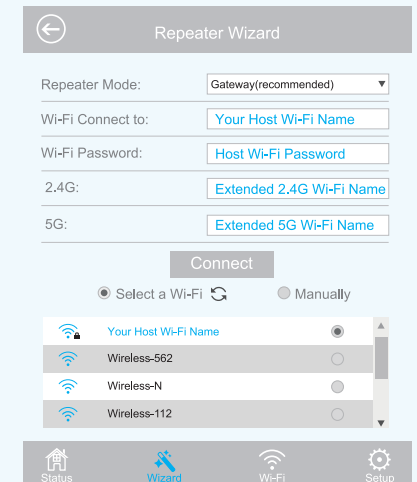
If the login window does not pop up, please refer to the FAQ > Q1.

2. The "System Setup" window will pop up for the first login. Configure and change the default login password, then click **Save**.



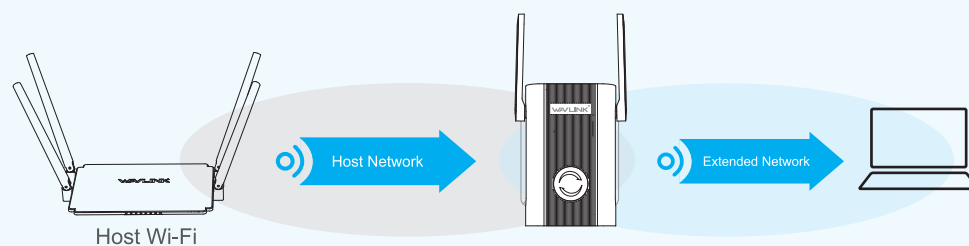
Note: The default password of the Extender is "admin", we strongly recommend you change the default password.

3. Click **Wizard**. Select a Wi-Fi SSID of your router (Host WIFI) and enter the password. Either keep the same SSIDs as your host WIFI or create new names for the extended networks. Verify your wireless settings and click **Connect** button.



3 Relocate

1. Plug the Extender into an electrical outlet about halfway between your router(Host Wi-Fi) and the Wi-Fi dead zone. The location you choose must be within the range of your existing host Wi-Fi.
2. Wait until the Status LEDs are ON. If the signal is weak, relocate it closer to your router to achieve a good (or better) signal quality.



✓ Ideal Location
Status LED
Blue On: Best
Yellow On: Good

✗ Too Far Away
Status LED
Red On: Weak
Red Flashing: Disconnected

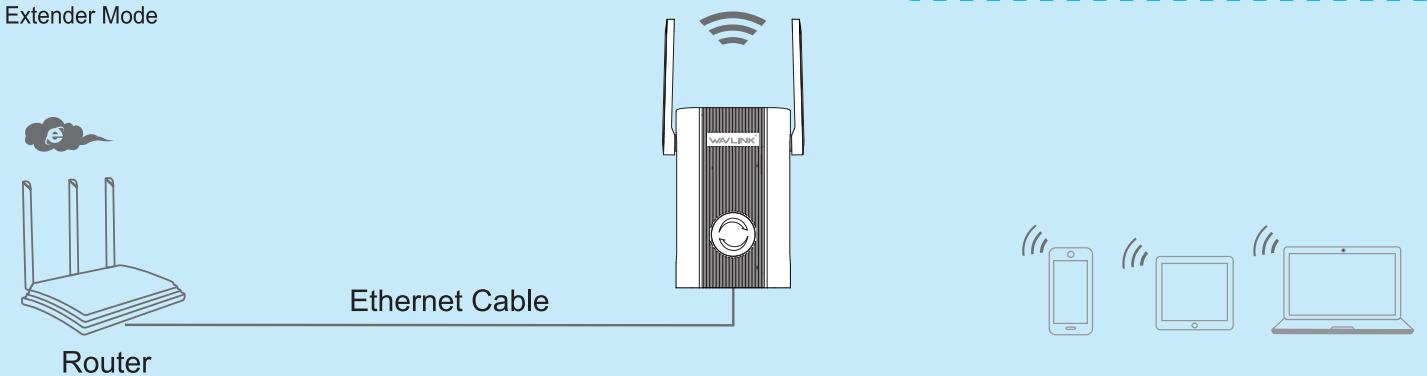
Tips:

- 1). Use your phone to find the ideal location for the Extender. If your phone's Wi-Fi signal (received from your router) is higher than 3 levels, it is the ideal spot to install the Extender. If not, we recommend you move it closer to your router for better Wi-Fi signal.
- 2). If you haven't changed the names of extended 2.4G and 5G at **Step 3**, the default extended 2.4G SSID (Wi-Fi name) will be your router's SSID with "EXT2.4G" within and "EXT5G" is for Extended 5G SSID correspondingly.
- 3). The extender 2.4G&5G passwords are the same as your Host passwords.

Access Point Mode (Optional)

The Extender also supports AP modes.

Extender Mode



Tips: The corresponding Status LEDs should turn on and stay solid, indicating successful connections.

Connect

1. Press the WPS button on the Router.

2. Press the WPS button on the Extender in 1 minutes.

Tips:

1). Use your phone to find the ideal location for the Extender. If your phone's Wi-Fi signal (received from your router) is higher than 3 levels, it is the ideal spot to install the Extender. If not, we recommend you move it closer to your router for better Wi-Fi signal.

2). The default extender 2.4G SSID (Wi-Fi name) will be your router's SSID with “**EXT2.4G**” within and “**EXT5G**” is for extender 5G SSID correspondingly.

3). The extender 2.4G&5G passwords are the same as your Host passwords.

Management via Web Browser

Change Login Password

1. Visit <http://wifi.wavlink.com>, and log in with the password you set for the Extender before.

2. Click **Setup->Login Password**.

3. Enter the old password. Then enter the new password (case-sensitive) and click **Apply** button.

4. Use the new password for future login attempts.

Wi-Fi Configuration

2.4G Wi-Fi Settings

Hide Wi-Fi: OFF

2.4G: WAVLINK-N

Security Type: OPEN

5G Wi-Fi Settings

Hide Wi-Fi: OFF

5G: WAVLINK-AC

Security Type: OPEN

Apply

Status

Wizard

Wi-Fi

Setup

Wireless Basic Configuration

1. Click **Wi-Fi -> Wi-Fi Setup**.
2. Customize your wireless network for the Extender.
3. After finishing configuration, click **Apply** button and the Extender will reboot.

Firmware Upgrade

Firmware upgrade can fix bugs of the Extender. However, We **DO NOT** recommend you upgrade the firmware of the Extender if it works properly.

1. Download the latest firmware file for the Extender from our Website www.wavlink.com.

2. Click **Setup->Upgrade Firmware**.

3. Click **Browse** (or **Choose File**) to locate the downloaded new firmware file.

4. Click **Apply** button, and wait a few minutes for the firmware upgrade to complete.

Warranty voids if you interrupted the upgrade procedure.

NOTE: Never interrupt the upgrade procedure by closing the web browser or physically disconnect your computer from the device. If the procedure is interrupt, the firmware upgrade will fail, and you may have to return the device to the dealer to ask for help.

GNU General Public License Notice

This product includes software codes developed by third parties. These software codes are subject to either the GNU General Public License (GPL), Version 2, June 1991 or the GNU Lesser General Public License (LGPL), Version 2.1, February 1999. You can copy, distribute, and/or modify in accordance with the terms and conditions of GPL or LGPL.

The source code should be complete, if you want us to provide any additional source code files under GNU General Public License (GPL), please contact us in these matters. We are committed to meeting the requirements of the GNU General Public License (GPL). You are welcome to contact us local office to get the corresponding software and licenses. Please inform us your contact details (full address)and the product code. We will send you a software package with the software and license for free.

The respective programs are distributed WITHOUT ANY WARRANTY; without even the implied warranty of MERCHANTABILITY or FITNESS FOR A PARTICULAR PURPOSE.

Please refer to the GNU General Public LicenseWeb site for further information.

<http://www.gnu.org/licenses/old-licenses/lgpl-2.0.html>

<http://www.gnu.org/licenses/gpl.html>

FAQ (Frequently Asked Questions)

- Q1. Why doesn't the login page appear after entering <http://wifi.wavlink.com>?**
 - Make sure your computer is connected to the Extended network's SSID or connect your computer to the Extender using an Ethernet cable.
 - Make sure your computer is set to obtain an IP address automatically.
 - Verify that <http://wifi.wavlink.com> is correctly entered in the web browser and press **Enter**.
- Q3. How do I restore the Device to its factory default settings?**
 - While the Extender is powered on, press and hold the Reset button until all the LEDs turn on momentarily.

- Q2. What should I do if the LED does not change to solid after completing OPTION ONE?**
 - You may have entered the incorrect Wi-Fi password of your host Wi-Fi during the configuration. Please log into the Extender's web-based interface to check the password and try again.
 - Please reset the Extender and go through the configuration again.
- Q4. Why my Wi-Fi Extender doesn't work in AP mode?**
 - Make sure the LAN port of the Extender is connected to the LAN port of your router and then try again.

For more details, please refer to www.wavlink.com.

WEEE Directive & Product Disposal

At the end of its serviceable life, this product should not be treated as household or general waste. It should be handed over to the applicable collection point for the recycling of electrical and electronic equipment, or returned to the supplier for disposal.

WN575A4说明书WAVLINK-E2
展开尺寸:A3大小, 折后尺寸: 98x105mm
材质: 105g铜板正反彩色印刷
负责人: 叶良平